

# allure<sup>®</sup>

## The Easiest Floor Ever!

### 2014 - 2015 COLLECTION



**THE ORIGINAL &  
STILL THE BEST!**

THE MARKET LEADER IN  
**INNOVATIVE**  
RESILIENT FLOORING

Exclusive to **Harvey Norman**  
"Leading the way in flooring Innovation and Design."

**allure<sup>®</sup>**  
**PLUS**

**allure<sup>®</sup>**  
**LOCKING GEN3**

**allure<sup>®</sup>**  
**LOCKING 220 GEN3**



*Allure Locking Gen-3  
Aspen Oak Black*

**allure®**

The Easiest Floor Ever!



# allure®

## The Easiest Floor Ever!

Allure is an innovative concept in resilient flooring, which encompasses all the advantages of other hard flooring without the disadvantages. Unlike some other forms of resilient flooring, Allure is easy to install and requires little to no sub-floor preparation. Just simply install it straight over most hard surfaces including ceramic tiles\*, timber, concrete\*, and existing vinyl floor.

Allure is easy and ready to install, which means you don't need to deal with messy glues and you can easily install it yourself. Allure's ease of installation is due to the patented GripStrip™ technology and patented UniFit technology.



### Grip Strip™ System Technology

Allure has become Australia's favourite floating floor. GripStrip™ system has a press-sensitive adhesive on each side that offers a very versatile and simple way to install Allure flooring. As utilised in Allure Plus, GripStrip™ system is exclusive in Australia to Harvey Norman.



### NEW UniFit Locking System Technology

The new generation locking system technology that makes installation faster and easier than ever - just simply angle, press and tap! The unique ends join together much faster and easier by using a tapping hammer. It's that simple! As utilised in Allure Locking Gen-3 and Allure Locking 220 Gen-3, the UniFit locking system is exclusive in Australia to Harvey Norman.

Allure has a hard wearing embossed surface with CBT (Ceramic Bead Technology) coating for durability. When it comes to durability, Allure will out-perform timber flooring every time, giving you peace of mind when it comes to the everyday rigours of children and pets.

In addition, Allure is 100% water resistant! There is no need to avoid wet areas with this revolutionary product! Bathrooms, kitchens and laundries are all possible with Allure.

To top it off, Allure comes with a full Lifetime Residential Wear warranty and 5-10 Year Light Commercial warranty.

Allure is the market leaders in innovative resilient flooring and continues to lead the world in product development. Beware of imitations!



Allure Plus  
Spotted Gum Natural

**The Allure collection** With a wide array of wood, tile and niche designs to suit anyone's taste.

**allure**  
**PLUS**

Unique rounded edge resilient flooring, creating a look of sophisticated wooden planks with GripStrip™ system technology for easy installation.

**allure**  
**LOCKING GEN-3**

Offers the versatility and natural look of the best selling Allure flooring with the new UniFit system technology for easier installation.

**allure**  
**LOCKING 220 GEN-3**

Innovative extra wide planks create a prestige look, with UniFit system technology for quicker and easier installation.



Easton Oak Mink

# allure<sup>®</sup> PLUS

Allure Plus innovative rounded edge creates the look of a sophisticated wood plank that will give a touch of modern style to any interior. It is perfect for residential homes and light commercial application as well.

Allure Plus, presents the revolutionary GripStrip™ system technology. Because each plank joins together and not onto the subfloor, it can be easily applied on top of almost any kind of surface. It is ready for direct installation and immediate use.

Another advantage of Allure Plus is its ability to be walked on immediately after installation! Allure Plus allows the minimum level of disruption to your everyday life.

Allure Plus is an affordable solution that comes with long lasting durability and is also water resistant. To top it off, it comes with a full Lifetime Residential Wear warranty and 6 Year Light Commercial warranty.

## Why Allure Plus?



## The GripStrip™ System Technology



Unique interlocking-edge design for simple installation. Simply lay overlapping GripStrip™ of one plank on adjacent plank. Minimum trimming involved.

\*See in-store for full installation details.

**allure<sup>®</sup>**

Allure Plus with the Innovative Round Edge Plank

## The Collection



Vintage Maple White 77011



Easton Oak Grey 75813



Cinnamon Maple 97513



Spotted Gum Brown 957103



Spotted Gum Red 957105



American Cherry 638115



Country Pine 11020



Amaretto 94512



Carolina Oak 77411



Cedarwood 94614



Sugar Maple 97511



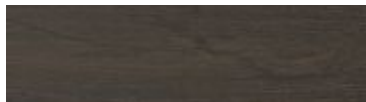
Golden Kempas 11053



Easton Oak White 75811



Autumn Maple 97512



Espresso 94414



Grey Maple 97514



Redwood 99113



Teakwood 99112



Red Walnut 94412



Easton Oak Mink 75818



Spotted Gum Natural 957106



Antique Cherry 61951



Easton Oak Brown 75814



Sahara Wood 77113



Easton Oak White

## Specifications

<b>Dimension</b>	127 x 914.4 x 4mm
<b>Plank per box</b>	18 planks
<b>Pack size</b>	2.09m <sup>2</sup> per box
<b>Wear Layer</b>	0.3mm
<b>Joining System</b>	GripStrip™
<b>Coating</b>	CB (ceramic bead)
<b>Warranty</b>	Lifetime residential 6 year light commercial





Travertine Natural

# allure<sup>®</sup>

## LOCKING GEN-3

**The Easiest Floor Just Got Easier**

Allure Locking Gen-3 offers the versatility and natural look of the best-selling Allure flooring with the innovative UniFit locking system technology that makes installation faster and easier than ever.

This technology lets you install Allure Locking Gen-3 directly over your old floor in just three steps, just simply angle, press and tap the boards into place. For that reason there is no need for floor preparation, using heavy tools, underlayment or messy glues.

Unlike timbers and laminates, Allure Locking Gen-3 is also completely waterproof. There is no need to avoid wet areas with this innovative product.

The Allure Locking Gen-3 Wood Collection with its 1210 x 190mm plank and deep embossed surface offers the most realistic look and feel of a timber floor.

The Allure Locking Tile Collection with its 605 x 304mm offers beautiful realistic marble, sandstone and travertine looks without the hardness, coldness and cost of real stone.

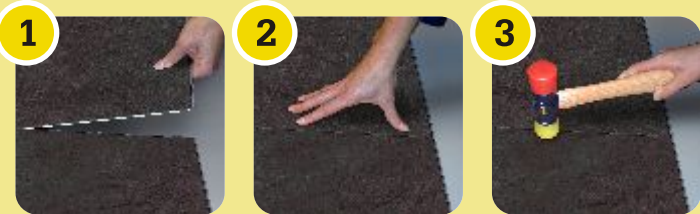
Allure Locking Gen-3 also comes with a full Lifetime Residential warranty and 10 year Light Commercial warranty.

Allure Locking Gen-3 is the chosen floor for many commercial and retail outlets due to its durability, ease of install and prestige look.

### Why Allure Locking Gen-3?



### The UniFit System Technology



The UniFit system technology is the easiest and most effective locking system. Install in just three simple steps: **Angle, Press and Tap** the boards into place!

\*See in-store for full installation



Vintage Oak Natural

## The Wood Collection



Rustic Maple 56213



Vintage Oak Natural 51711



Vintage Oak Cinnamon 517115



Sawcut Dakota 54112



Aspen Oak Black 546128



Sawcut Montana 98311



Aspen Oak White 54617

## The Tile Collection



Sandstone Taupe 48812



Travertine Natural 742911



Sandstone Steel 48817



Sandstone Steel

## Specifications

### Wood Collection

Dimension 1210 x 190 x 5mm

Plank per box 8 planks

### Tile Collection

Dimension 605 x 304 x 5mm

Plank per box 10 planks

### Other Specifications

Wear Layer 0.5mm

Pack size 1.84m<sup>2</sup> per box

Joining System UniFit locking

Coating CB (ceramic bead)

Warranty Lifetime residential  
10 year light commercial





# allure<sup>®</sup>

## LOCKING 220 **GEN-3**

EXTRA **WIDE** RESILIENT FLOORING

Allure Locking 220 Gen-3 features an innovative wider plank for more of a natural oak look in your home and office area.

Allure Locking 220 Gen-3 features a new locking system technology that makes installation faster and easier, the UniFit Locking system. Allure Locking 220 Gen-3 is easy to put together with 3 simple steps - just simply Angle, Press and Tap to Lock! This technology allows the planks to be installed over existing floors such as a natural wood, concrete, vinyl and ceramic, saving you time and money!

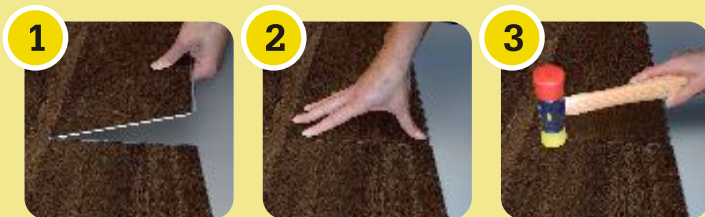
Allure Locking 220 Gen-3 has a luxurious and deep embossed surface offering the most realistic look and feel of a timber floor. With its deep embossed surface and a wider plank, Allure Locking 220 Gen-3 creates a prestige look and depth to any room.

Allure Locking 220 Gen-3 also comes with a full Lifetime Residential warranty and 10 year Light Commercial warranty.

### Why Allure Locking 220 Gen-3?



### The UniFit System Technology



The UniFit system technology is the easiest and most effective locking system. Install in just three simple steps: **Angle, Press and Tap** the boards into place!

\*See in-store for full installation

**allure<sup>®</sup>**

Allure Locking 220 Gen-3 featuring the Widest Resilient Flooring in the Market





## The Collection



Smoked Oak Tan I966102



Golden Oak Natural I96712



Golden Oak Mocha I96714



Golden Oak White I96715



Golden Oak Wheat I96716

## Specifications

<b>Dimension</b>	1210 x 220 x 5mm
<b>Plank per box</b>	7 planks
<b>Pack size</b>	1.86m <sup>2</sup> per box
<b>Wear Layer</b>	0.5mm
<b>Joining System</b>	UniFit locking
<b>Coating</b>	CB (ceramic bead)
<b>Warranty</b>	Lifetime residential 5 year light commercial



# CARE & MAINTENANCE

Allure flooring is one of the easiest floors to maintain, please follow the recommendations in this guide to maintain and protect your Allure flooring.

## PREVENTIVE MAINTENANCE:

1. Use NON-RUBBER protective mats in front of any doors leading to the outside. This helps keep the sand and grit from getting on to your floors. Gritty sand in any floor covering is your worst enemy.
2. Install proper floor protectors (felt preferred) on all furniture legs used on resilient flooring. Protectors will allow chairs to move easily over the floor without scuffing or scratching. Clean protectors on a regular basis to remove any grit that may have become embedded on the bottom of the furniture leg. For any swivelled type office chairs and other rolling furniture, please install 5cm wide non-staining flat casters. Do not use rubber casters.
3. To keep your floor looking its best, dust mop or vacuum your floor at least twice a week. Do it more often on floors with heavy traffic. Do not use a household dust cleaner of any kind as this may cause the floor to become slick or damage the finish. Simply sweep the floor as often as needed.
4. Do not allow pets with unclipped nails to damage your Allure floor. It may result in severe scratching to the surface. The same is true for any high heeled shoes that do not have proper tips on the heels.

5. Avoid exposure to direct sunlight for prolonged periods of time. During peak sunlight hours, use drapes or blinds to minimize the direct sunlight on the Allure floor. Most types of flooring will be affected by continuous strong sunlight. To avoid an uneven appearance, please consider relocating any area rugs from time to time. In addition, excessive temperatures are not good for resilient floors. Some natural ventilation or intermittent air conditioning in vacant homes should be considered. Long term continuous inside temperatures over 35°C combined with strong direct sunlight will damage your Allure floor and cause the installation to fail.

6. Do **NOT** use a steam cleaner on Allure flooring as it may result in permanent damage to your floor and will void the warranty.

## REGULAR MAINTENANCE:

1. Food spills should be cleaned up as quickly as possible with a quality liquid vinyl cleaner. Make sure the cleaner you choose is an all purpose liquid cleaner that is **NON-ABRASIVE**.

We do not recommend powdered cleaners, oil soaps, dishwashing detergents, or other dusting products. Try to use a non-rinsing, biodegradable cleaner that leaves no residue or haze and requires no rinsing after application.





*Allure Plus  
Spotted Gum Natural*

2. Shoe marks and scuffs can be easily removed using a spot application on your non-abrasive cleaner and a green Scotch Brite pad.

3. Regular household dirt can be cleaned with a neutral vinyl cleaner applied as indicated on the product label. Some hand wiping may be required to remove tough spots and spills. Always sweep or vacuum your Allure floor before cleaning so that all loose dirt and particles are removed. For best results do not use combination cleaner/finish products.

4. **DO NOT WAX YOUR ALLURE FLOOR!** The surface of your Allure floor is very dense and non-porous; this prevents wax from penetrating and thus will build up a bed for yellowing and dirt collection. The same non-porous feature also provides all the protection against wear and staining that you will need.

5. If your floor has been exposed to excessive amounts of water due to flooding, don't panic, **ALLURE LOCKING GEN-3** and **ALLURE LOCKING 220 GEN-3** are **WATERPROOF!** Simply remove the water as quickly as possible with a Wet-Vac or other device and ventilate the room. A dehumidifier should be promptly turned on in the room to reduce the moisture levels back to normal. Do not dry the room below the normal moisture level that existed previously.

6. If accidental deep scratches appear on your floor then it might be necessary to replace such damaged planks.

7. If the scratches are fine and the result of normal household use, then it is recommended only to fill them with one or two coats of a matte floor finish.



*Allure Plus  
Redwood*

**allure®**  
**The Easiest Floor Ever!**





# allure<sup>®</sup>

allure<sup>®</sup>  
**PLUS**

allure<sup>®</sup>  
**LOCKING** GEN-3

allure<sup>®</sup>  
**LOCKING 220** GEN-3

Allure is the ultimate stylish and affordable flooring solution for creating your dream decor. For more information, talk with your local **Harvey Norman Flooring** or visit us online at [www.harveynorman.com.au](http://www.harveynorman.com.au).

Exclusive to **Harvey Norman**

"Leading the way in flooring Innovation and Design."